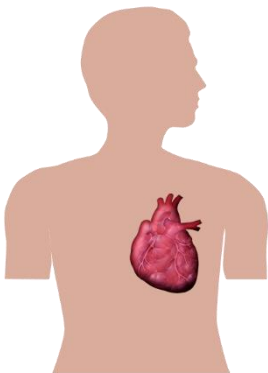




Having your blood pressure taken



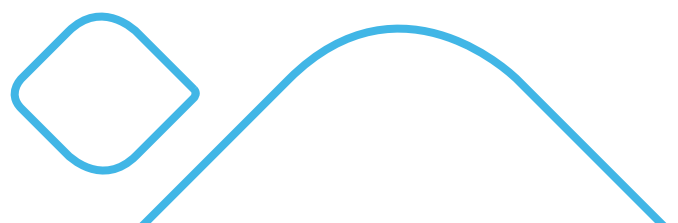
The nurse will check your blood pressure.



This is to check your heart is pumping your blood around your body properly.



This is a blood pressure machine.





The nurse will wrap the cuff around your arm and it will go tight.

It might be a bit noisy.



It will not last long. The machine will beep when it is finished.



The nurse will take the cuff off of your arm.



Please contact the Patient Support and Complaints Team if you require this leaflet in a different format, or would like to feedback your experience of the hospital.

Email ruh-tr.psct@nhs.net or telephone 01225 825656.

Date of publication: September 2023 | Ref: RUH EAZ/027
© Royal United Hospitals Bath NHS Foundation Trust

