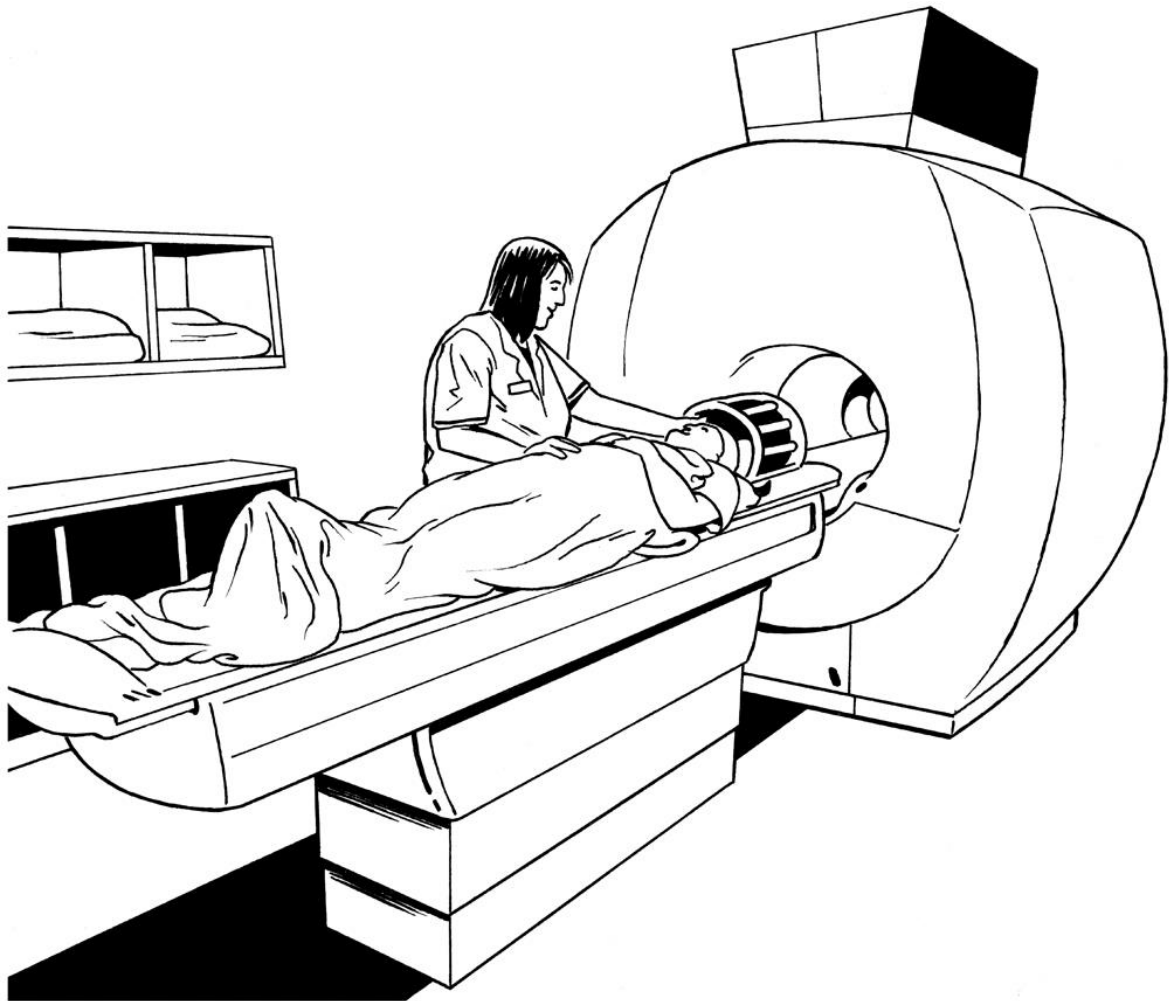


Having an MRI Scan



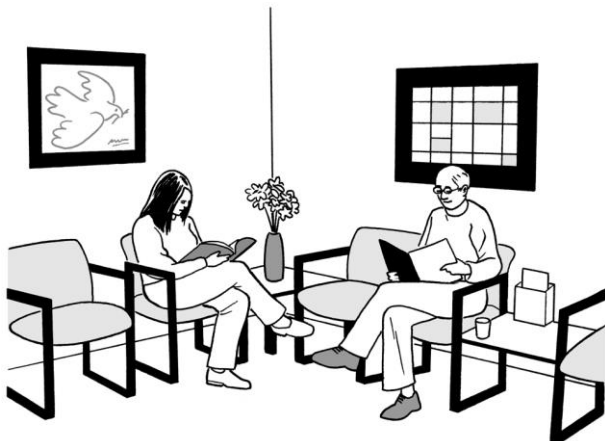


MRI scans let us take photos of the inside of your body and bones.

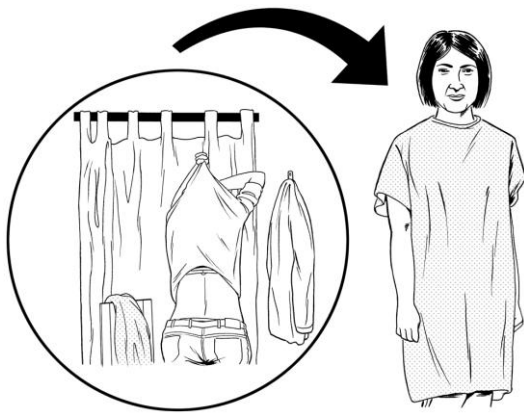


Remember to bring your letter.

Go to the reception desk.



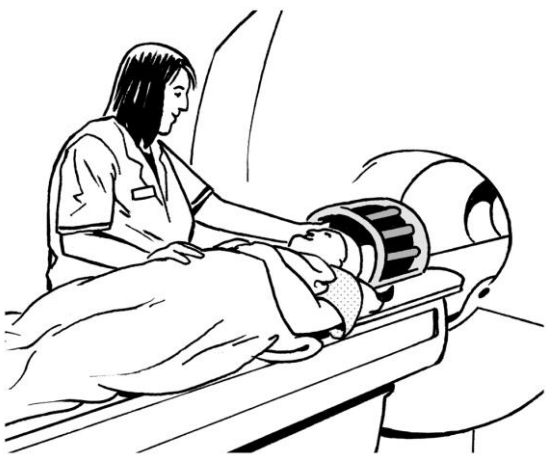
You may need to sit in the waiting room until a member of staff call out your name.



You may need to take some clothes off and put on your hospital gown.



The person doing the scan will ask you to take off all your jewellery including your watch.



The person doing the scan will ask you to lie down on a table.

They might need to put something over the area that is being scanned.



The MRI scanner is very noisy.
So we will give you
headphones to wear.

You can listen to music or
stories. Bring a CD you like or
you can choose one of ours.



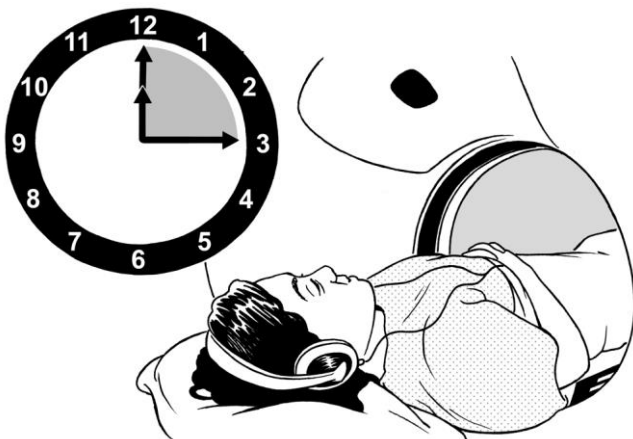
The person doing the scan
will be able to talk to you
through your headphones
while the scan is taking
place.



If you are frightened and
want to stop, you can press
a button



Your carer can stay near to you during the scan.



MRI scan takes about 15 minutes to 60 minutes.

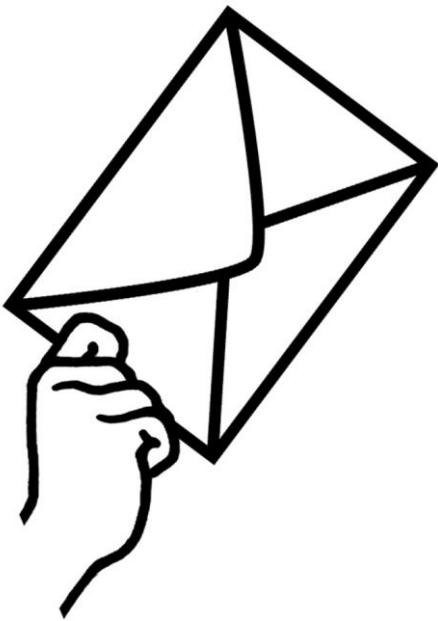


The results of the scan will be seen by your doctor.

The doctor will tell you what to do next.



If you were sent to the hospital by your GP, please call them after 10 days and make an appointment to see them.



If the hospital asked you to have a scan, you will be sent an appointment to see the doctor.

Royal United Hospitals Bath NHS Foundation Trust
Combe Park, Bath BA1 3NG
01225 428331 www.ruh.nhs.uk

If you would like some more help please contact Patient Advice and Liaison Service (called PALS for short). PALS can also help you tell the nurses and doctors what you think of your care. Email ruh-tr.PatientAdviceandLiaisonService@nhs.net or telephone 01225 825656.