

Update on COVID-19 (Coronavirus) planning and response.

A Covid-19 Support Team has been established and is working with the EPRR, Infection Prevention and Control and Microbiology Teams and is coordinating the Trust responses to the next phase of the COVID-19 incident. The response is being managed as a critical incident.

In line with guidance there is now enhanced tactical and strategic coordination as well as further system support as required.

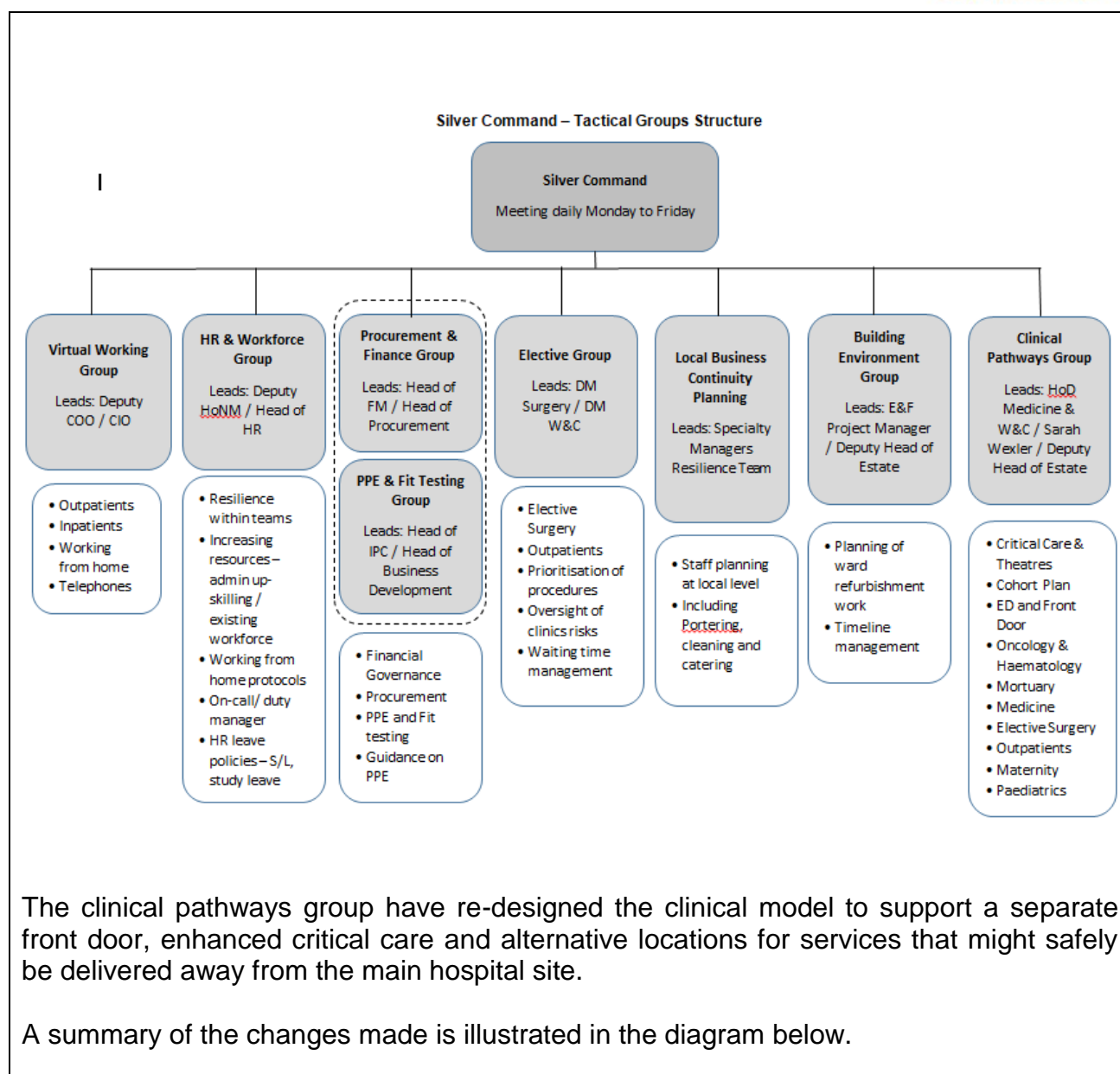
The BSW system is also now declared critical incident response with GOLD BSW system calls three times a week and RUH Gold now daily. The Incident Control Room is now established and will open fully on the 23rd March.

Covid-19 Command Structure



Further detail of the incident governance arrangements is outlined in the COVID-19 Trust Structures and Arrangements document, shared with Gold and Silver groups and on call managers.

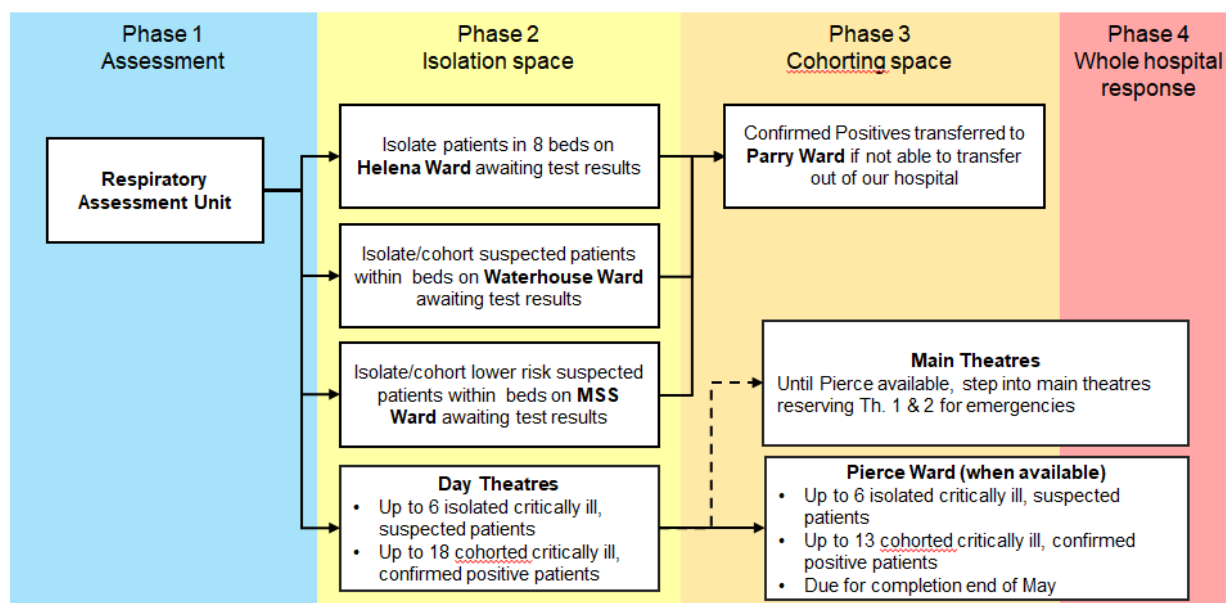
To support the Silver Command level, a number of tactical groups have been set up to take forward key pieces of work. The structure of these groups is set out below:



COVID-19 PLANNING

Clinical Model

- Draft plans for clinical model
- Focus on extending cohort and critical care capacity



- The workforce group have designed a stock take and capacity map to ensure that we are able to look after staff, respect and support self-isolation and the changing national guidance on social distancing.
- The PPE and Infection Control group are delivering both the fit testing programme and the management of equipment and supply chain risks.

On-going risks are being mitigated through the Bronze, Silver and Gold decision making framework and there are two specific risks which are being actively managed.

- 1) Staffing capacity as the Trust supports self-isolation and maintains safe staffing levels to the provision of acute care
- 2) The supply chain for PPE and critical equipment to support increasing demand for this type of equipment

There are further risks of actively managing the changing clinical model and in particular the prioritisation of acute inpatient care and assessment. The suspension of elective operation for routine cases is in place in line with national guidance.