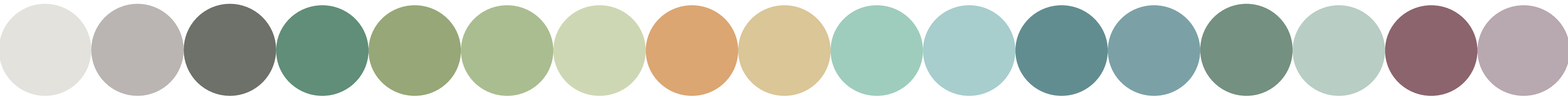




a journey through the botanical gardens



What will the inside of the Dyson Cancer Centre look like?

We've taken the powerful human instinct of biophilia - the connection with nature, as inspiration for the interior design throughout the new centre. 'Bringing the outdoors in' has been shown to support mental and physical health and will complement the high quality care provided by the RUH.

We've developed a theme of Land, Water and Sky, influenced by a meander through the botanical gardens of Bath and surrounding local landscapes and we're using natural textures, tones and colours in a variety of materials. This will also make it easier to find your way around the centre, as floors, doors and walls will be tailored according to area and use.

This connection with nature will create a relaxed and welcoming environment in this high tech building.

We are also ensuring that everyone has the right access and facilities to support their needs; this includes a dementia and disability friendly environment.

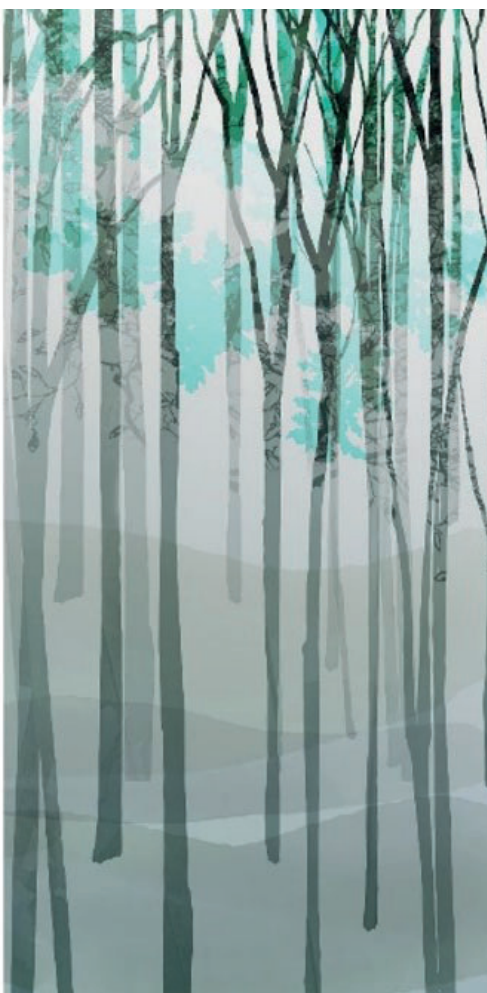
Art, sculpture and installations will also play an important role, providing a rich representation of nature throughout the centre with subtle, elegant imagery and graphics.

The Interior Design concept brings together the patient journey with a meander through the botanical gardens of Bath and surrounding local landscapes.

Using natural textures, tones and colours in a variety of materials the palette reflects a comforting, supportive environment specifically tailored to the emotional needs of each space. We are using natural materials and patterns to maintain a connection with nature to create a relaxed and welcoming environment in this high tech building.

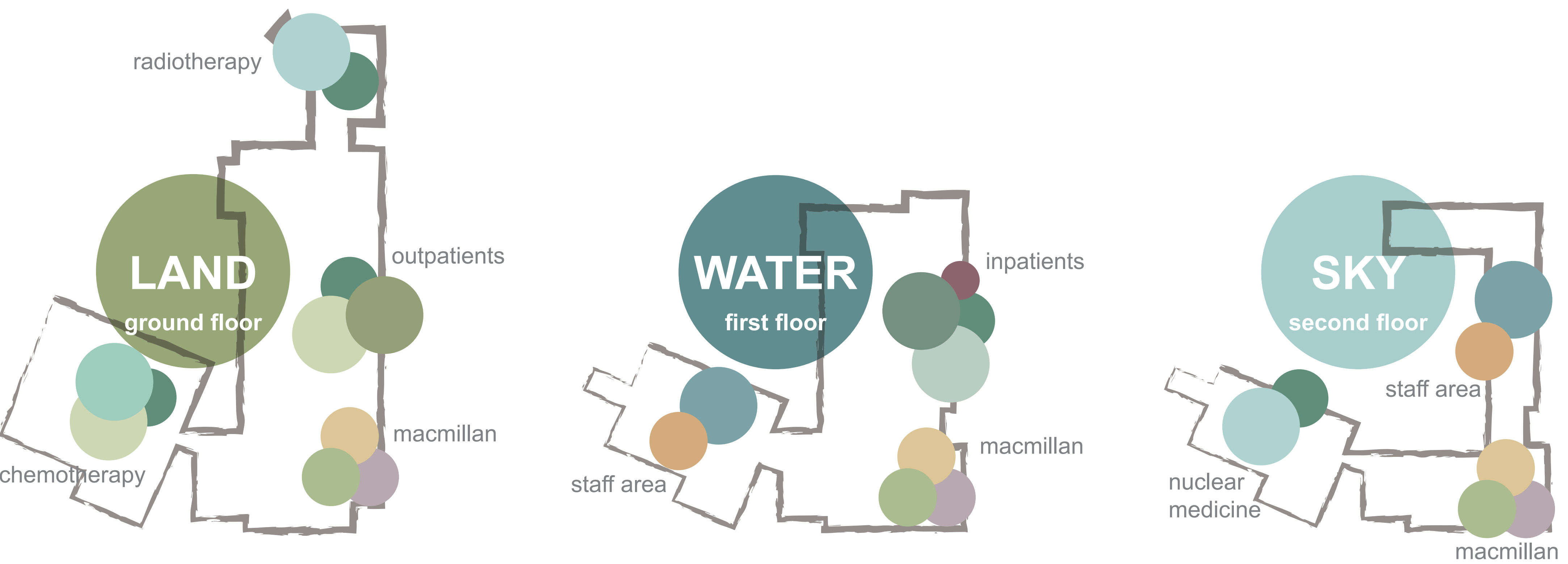


land | water | sky : *bringing the outside in*



We're working together to build our new Dyson Cancer Centre





**department identities**  
introducing a colour that works cohesively across the wayfinding themes, each department shares a consistent arrival for a sense of continuity throughout the building.

**department palettes**  
the palettes then separate into a range of tones to help create variety and a sense of place.



proposed finishes

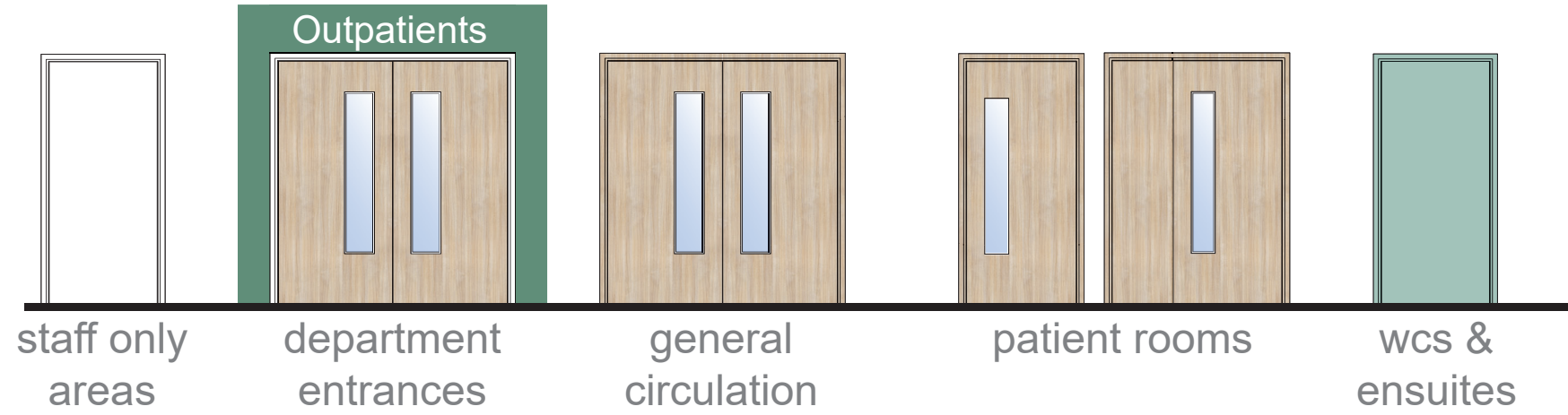
floor finishes

wall finishes

neutral base palette  
with earthy tones & textures

feature finishes  
with natural tones to reflect the local landscapes

door strategy



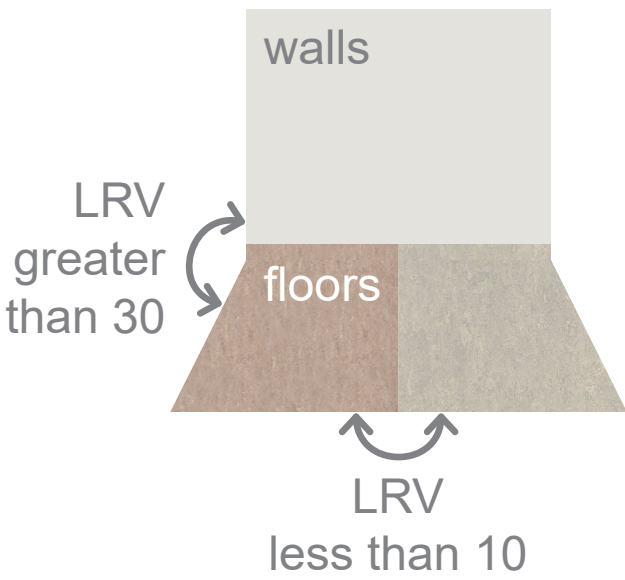
floor finishes strategy

main circulation  
natural clay tones throughout silently supports easy wayfinding

ward circulation  
soft, lighter tones to differentiate from the main routes adding a sense of calm to ward areas

patient rooms  
a linear design to reference natural timber adding warmth and comfort to patient spaces.

dementia and disability friendly design



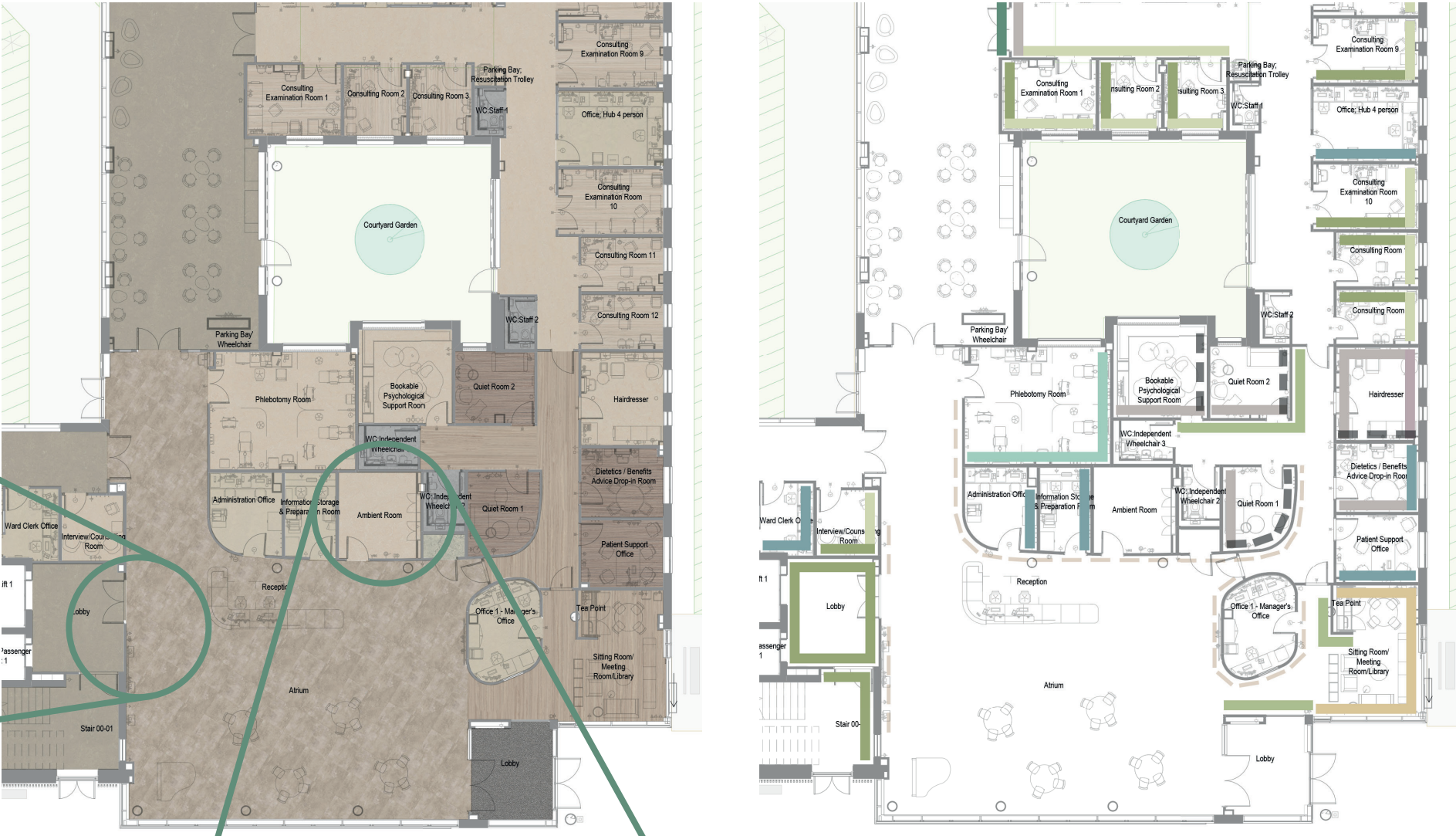




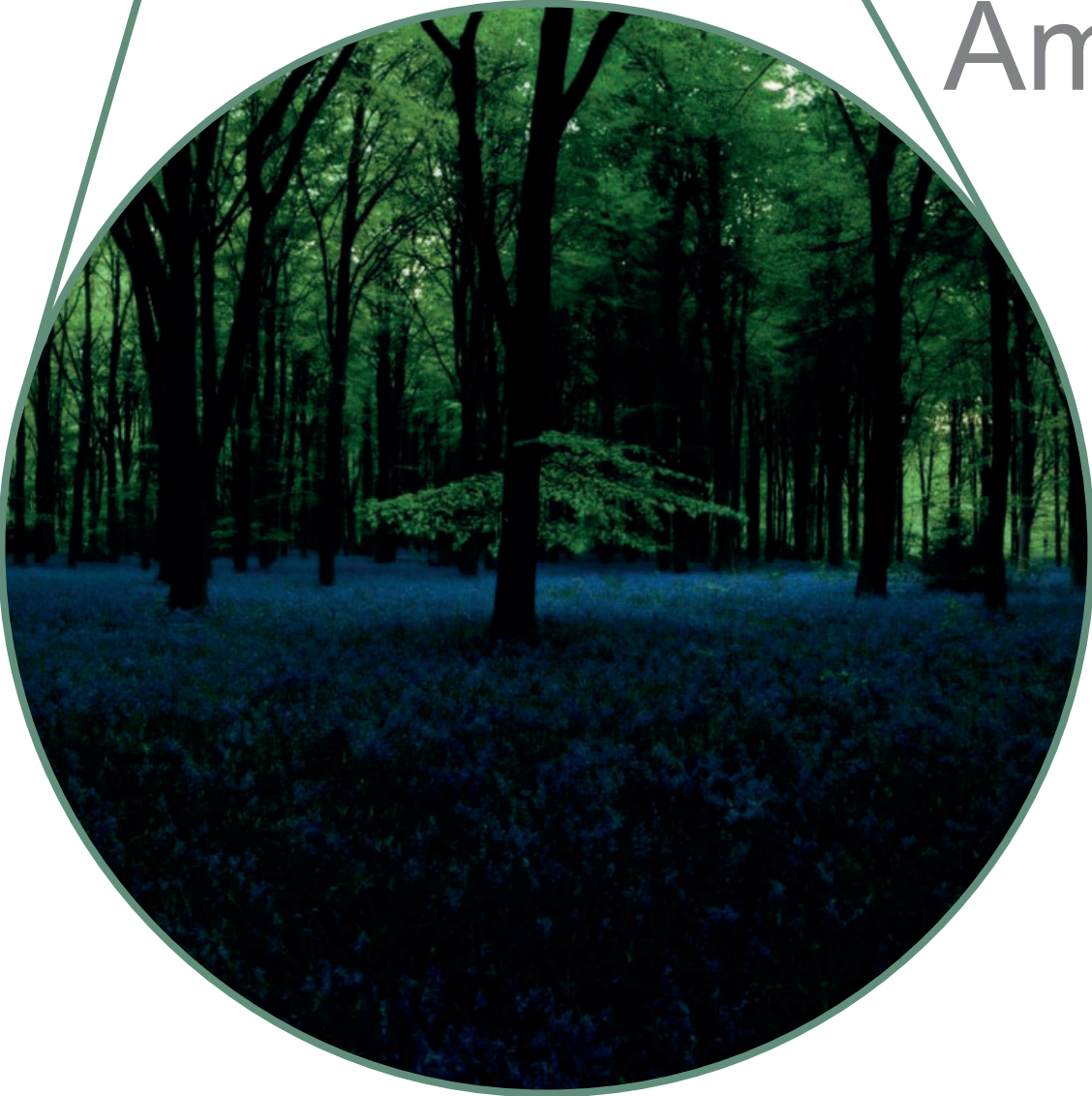
Atrium and Main Reception



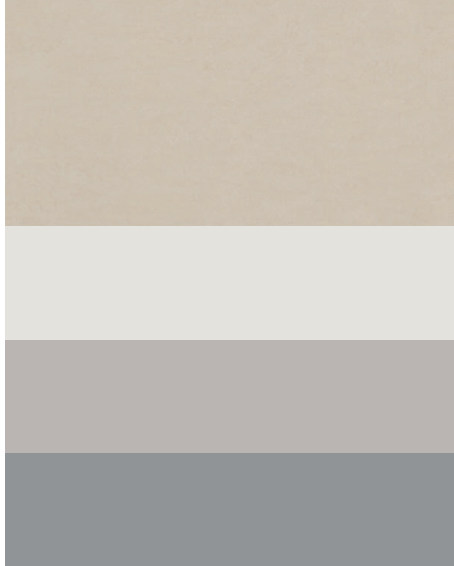
Bee Eaters in Olive Trees  
by Mark Sands



Ambient Room



projection and soundscape of a local  
bluebell woodland through dawn to dusk  
by Chrystel Lebas



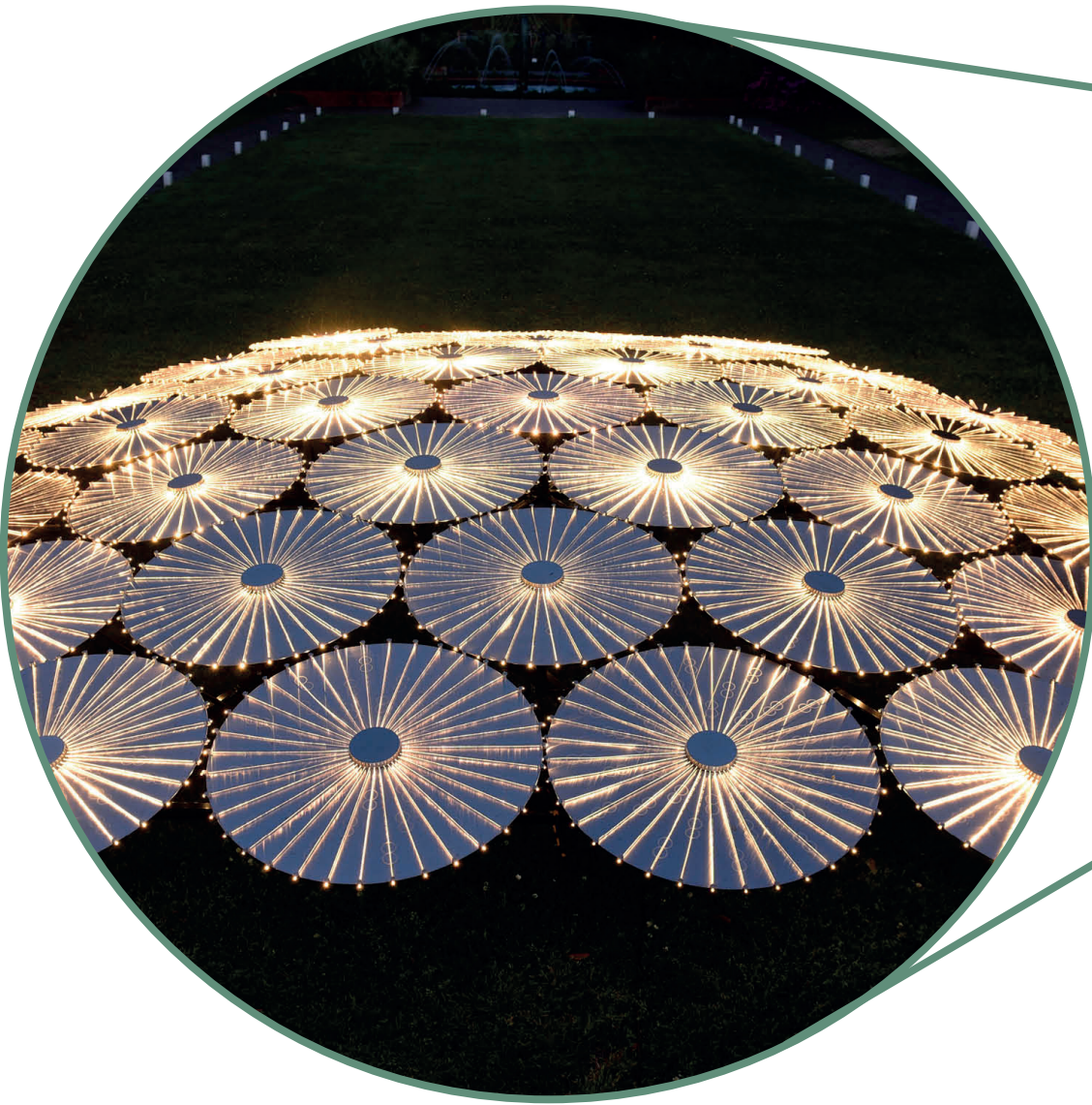
Outpatients



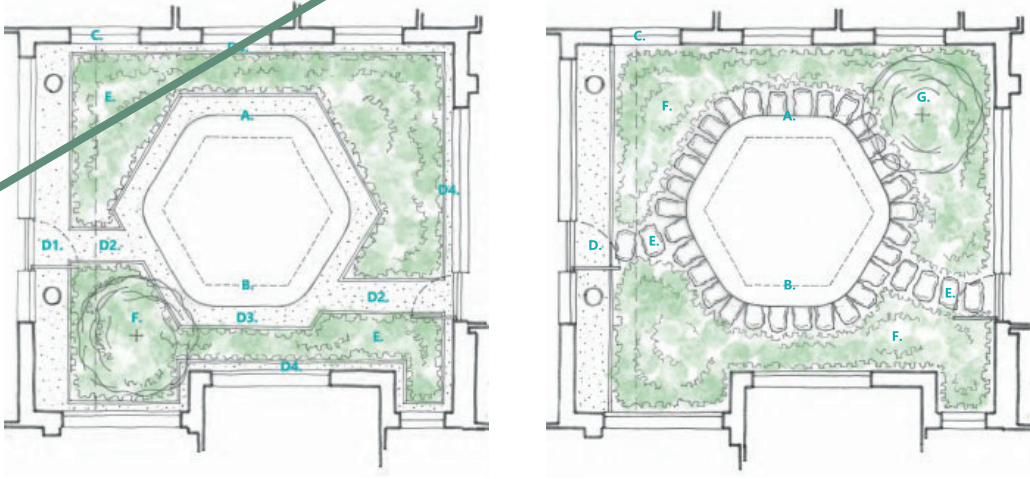
Reeds  
donation by Deidre Dyson



Silver Birch Acrylic Screens  
from current waiting area



Time and Again  
by Bruce Munro



Proposed Layout Options  
Nicholas Pearson Associates

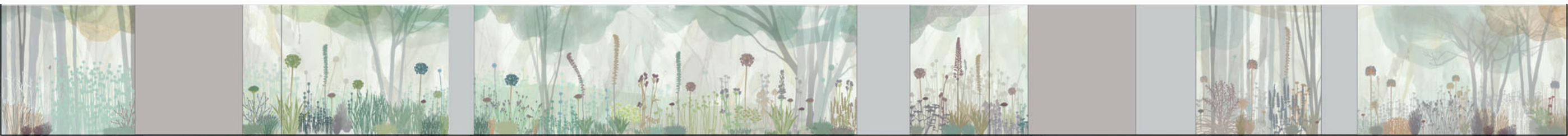
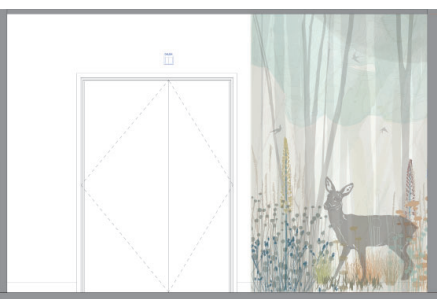
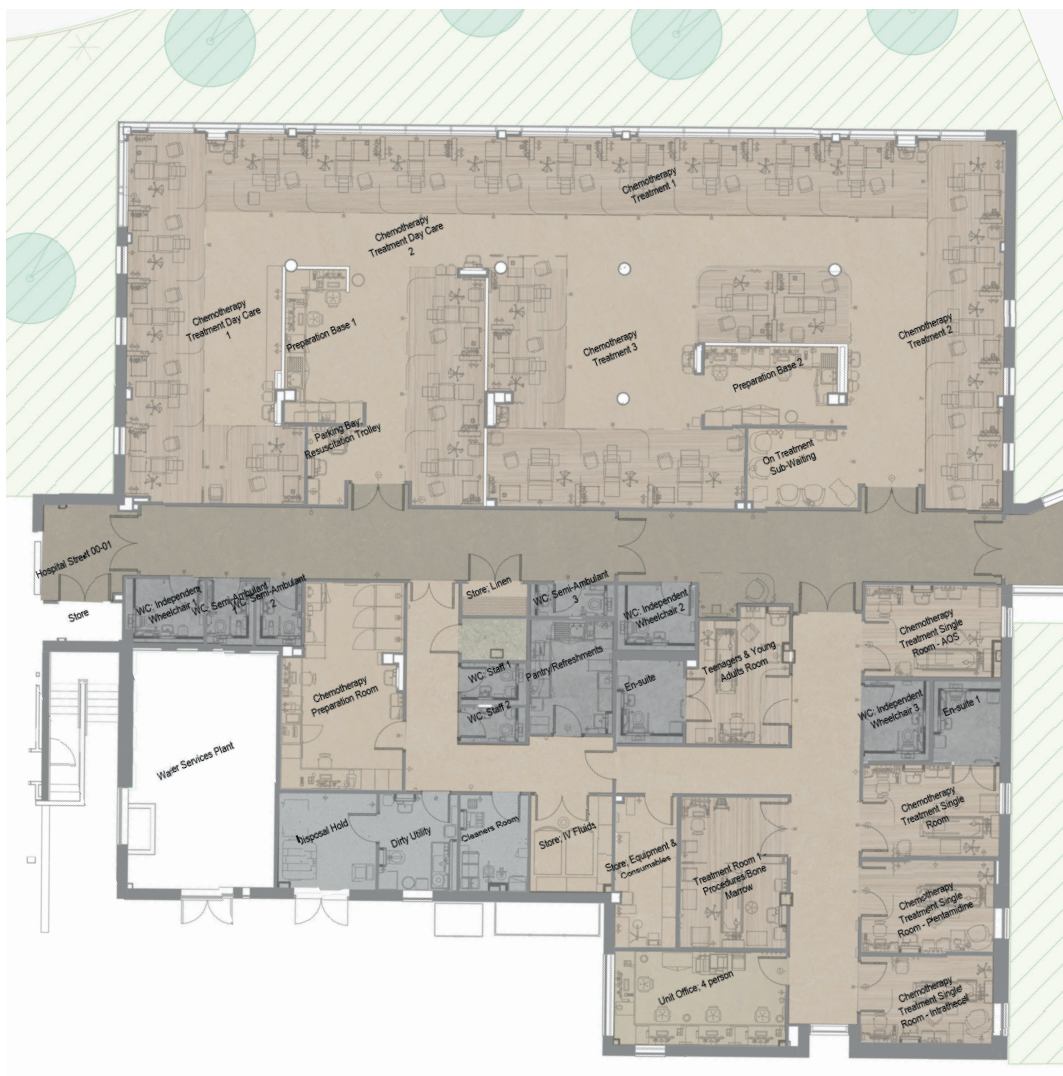




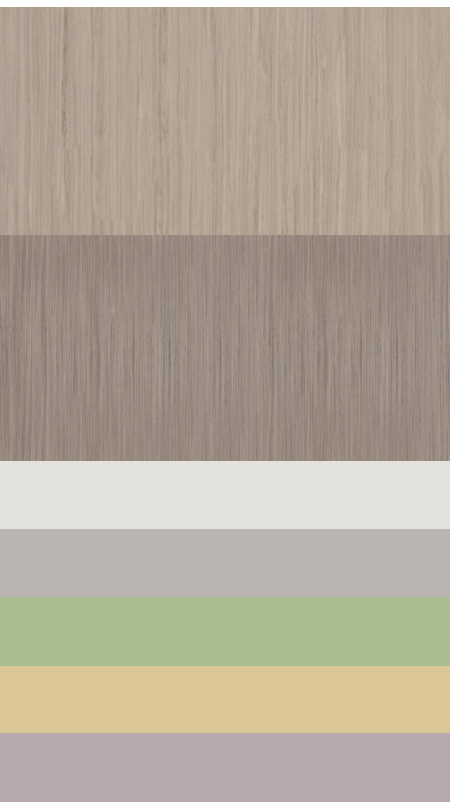
Chemotherapy



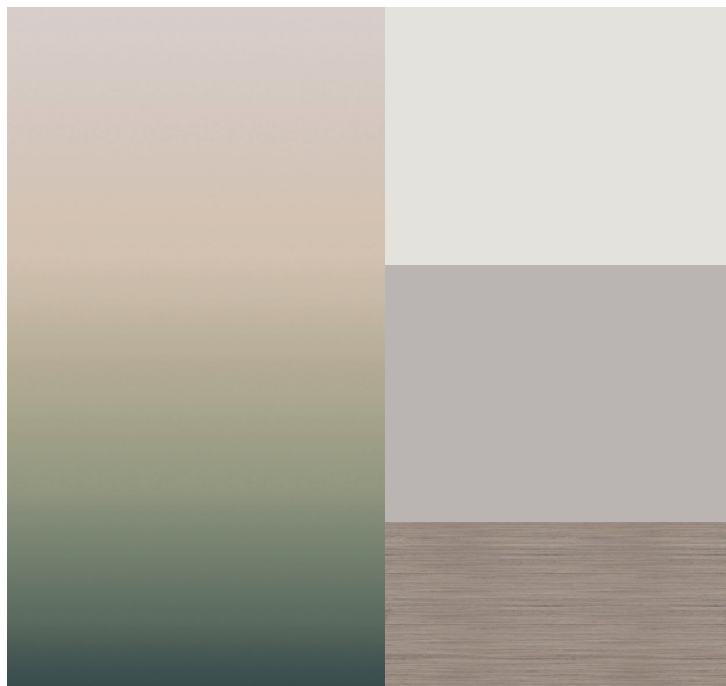
Surface Design  
by Kate Bond



Macmillan Wellbeing and Information Hub



01 - hairdresser



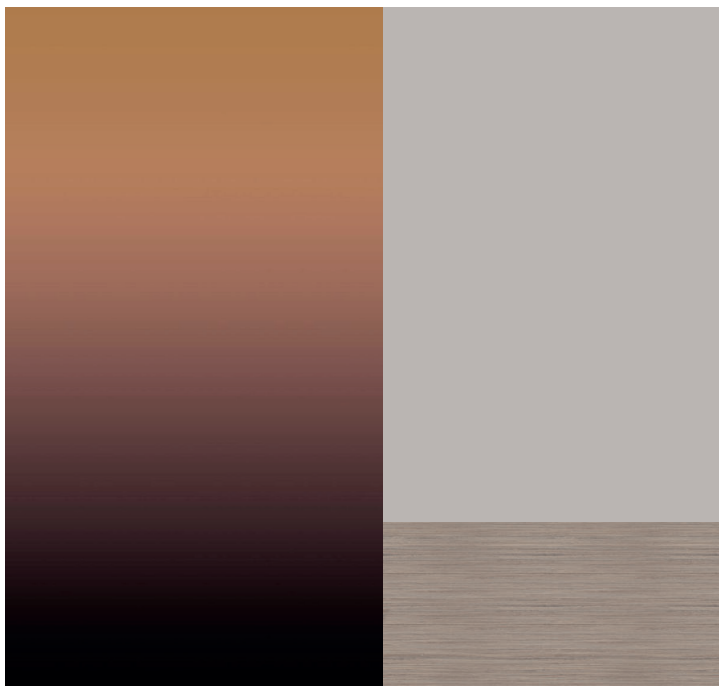
02 - quiet rooms



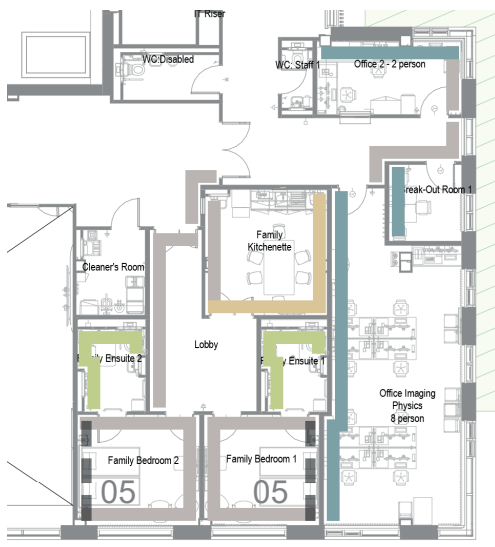
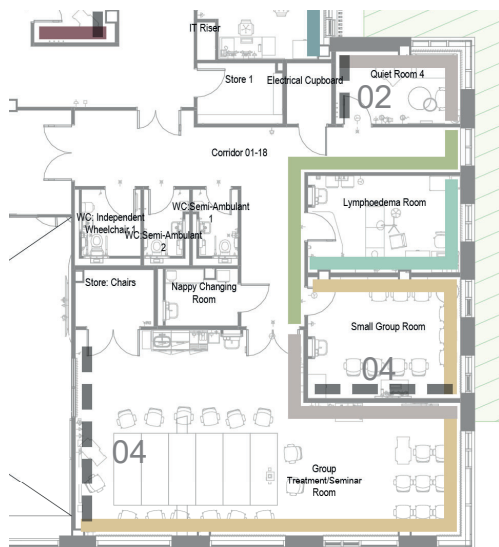
03 - support room



04 - group rooms

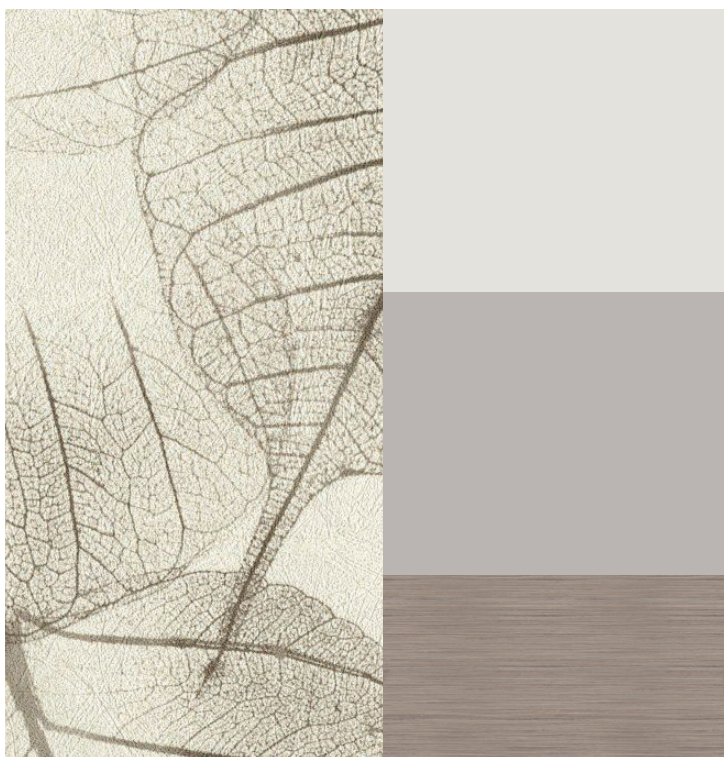


05 - family overnight stay



initial ideas for artwork...  
participatory artwork  
made with artists and  
oncology patients

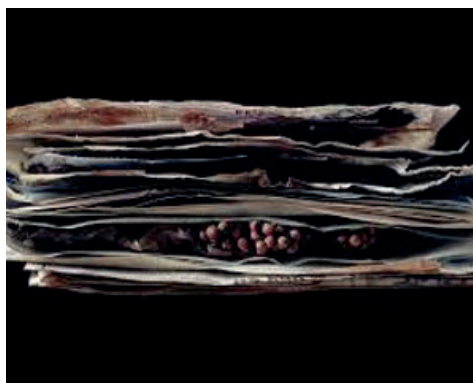
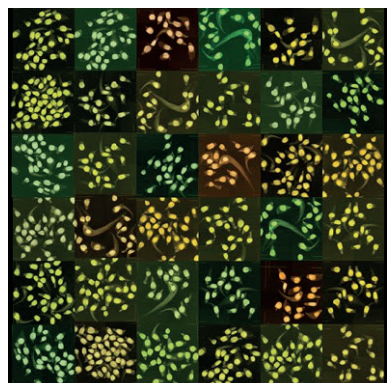
Clinical Imaging



03 - support room



initial ideas for artwork...  
cellular structures of plants



Seedscares: Future Proofing  
Nature (various artists)

We're working together to build our new Dyson Cancer Centre





Inpatients



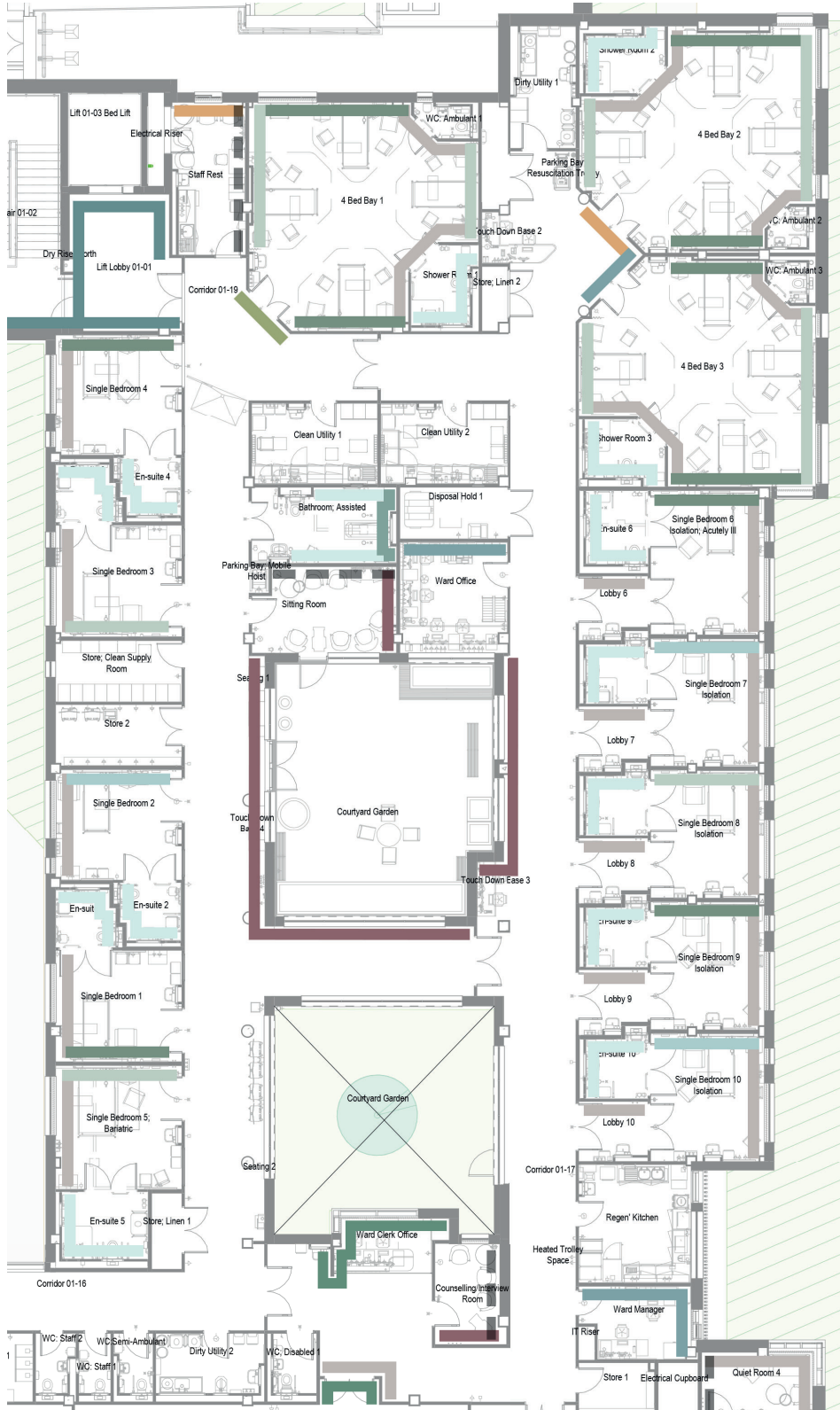
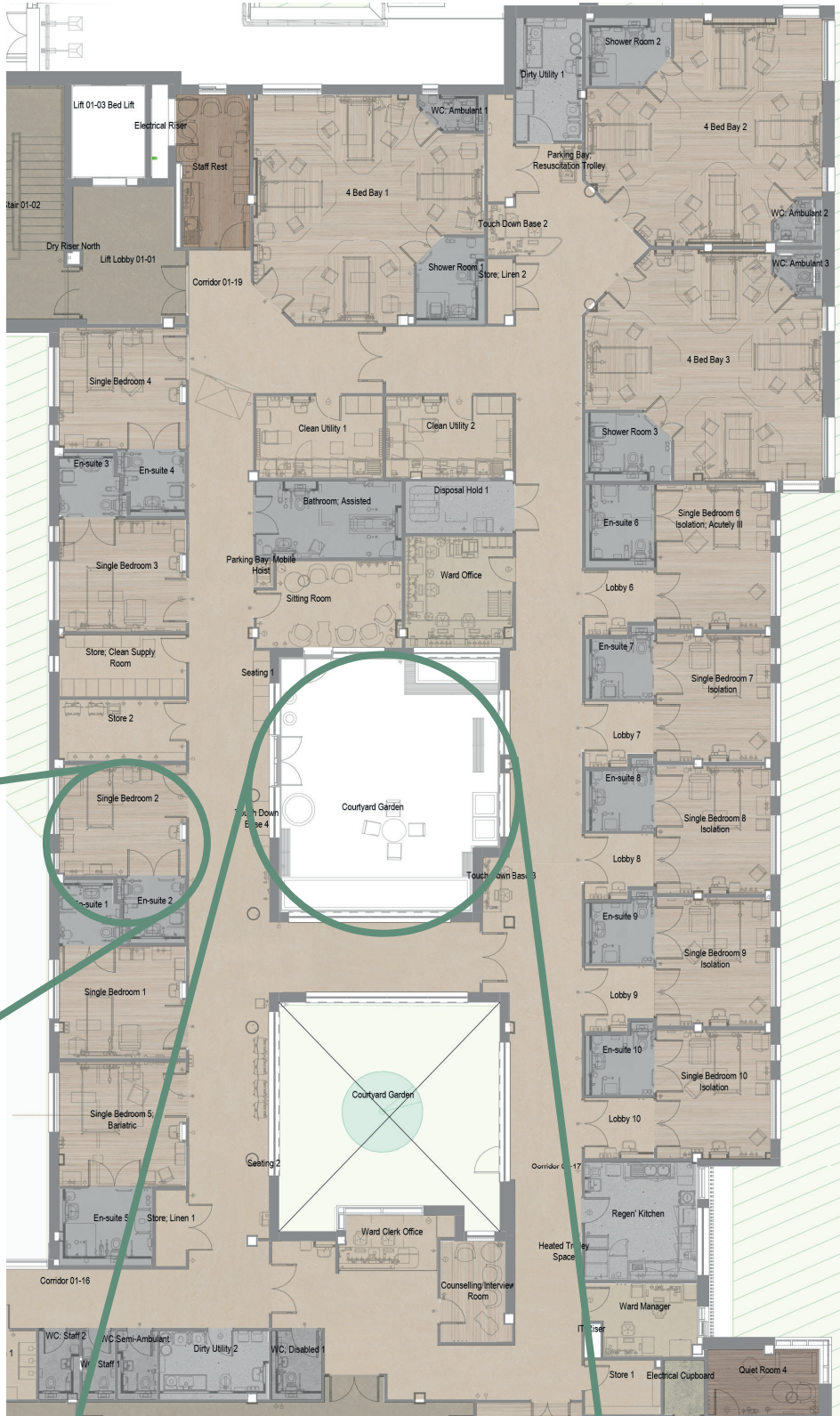
06 - inpatients sitting & counseling rooms



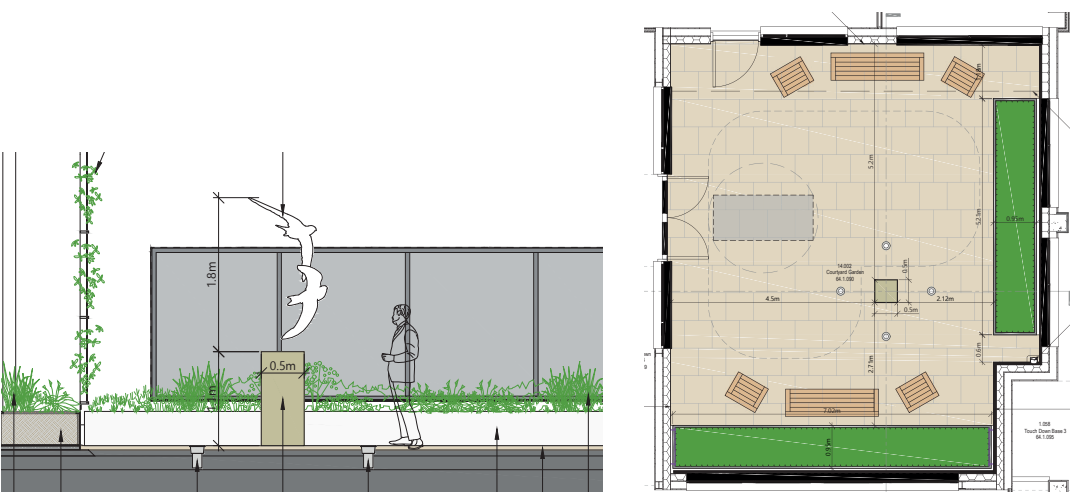
Surface Design  
by Kate Bond



ensuites



Bronze Swifts: A sign of summer...  
by Hamish Mackie



Proposed Layout  
Nicholas Pearson Associates

Radiotherapy

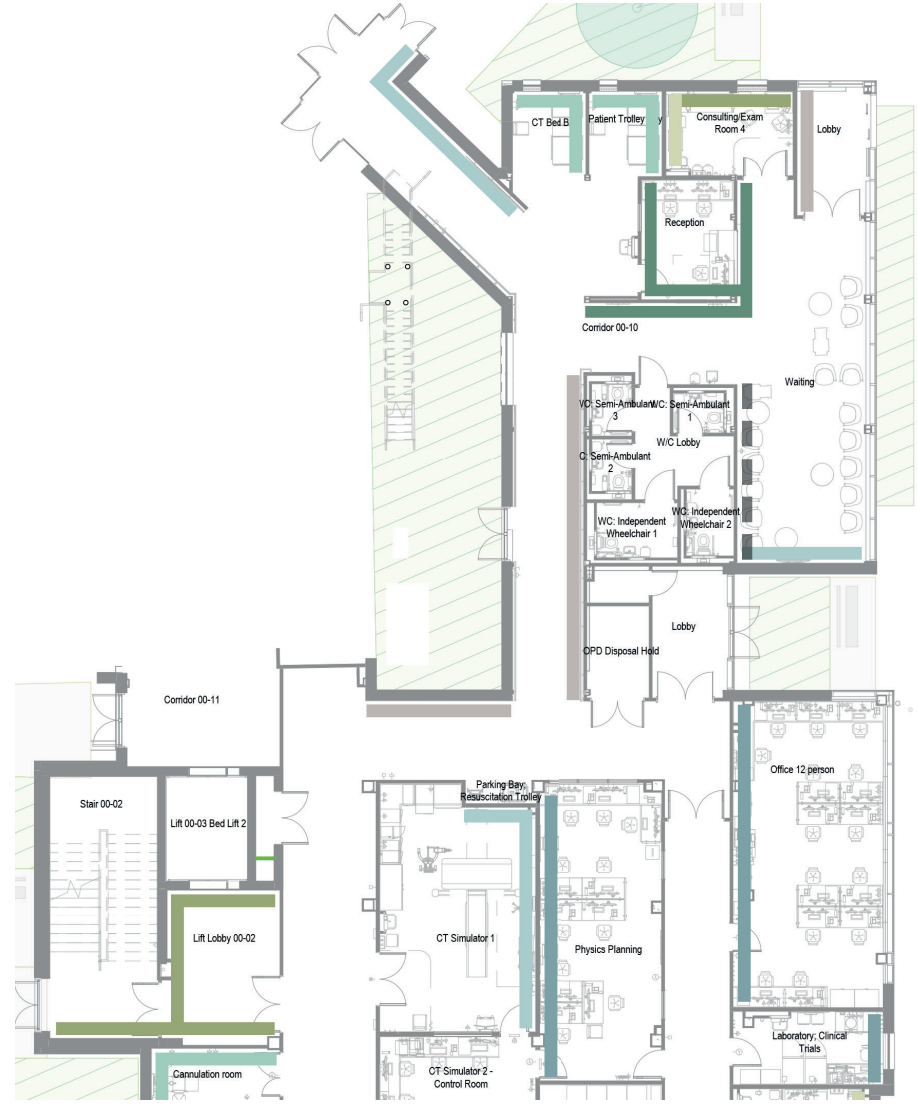
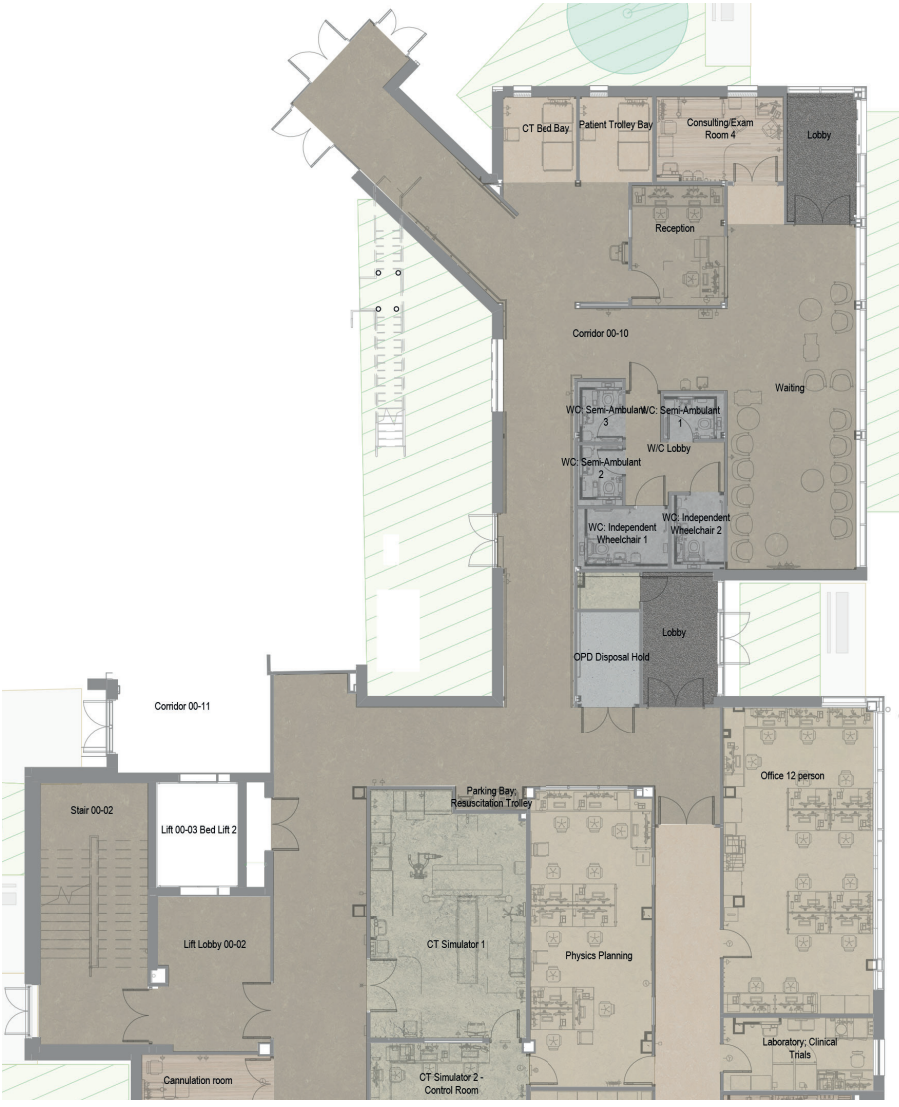


ammonites found onsite during excavation

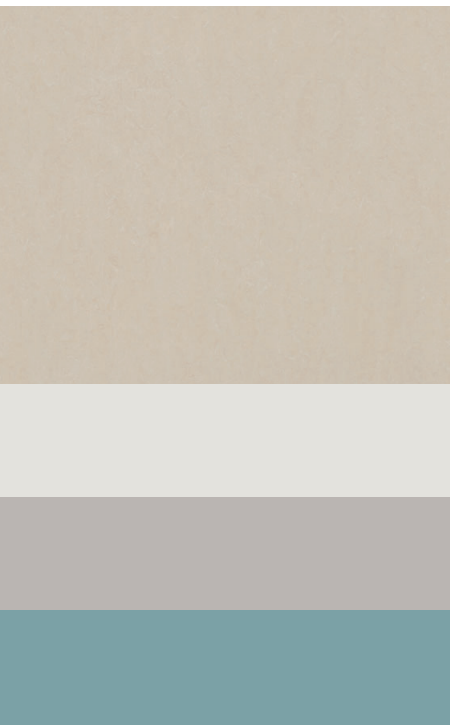


RUH surrounding landscapes

initial ideas... a sense of place: our heritage



Staff & Admin Spaces



07 - staff rest



08 - staff seminar room

unconfirmed artwork for staff  
areas: initial ideas...

